

负温度系数(NTC)热敏电阻器

Negative temperature coefficient (NTC) thermistor

MF73、MF74超大功率型NTC热敏电阻系列

MF73、MF74 Super-power NTC Thermistor series

● 特点 Characteristics

- 结构可靠、便于安装
- 抑制浪涌电流能力强
- 工作的稳态电流大
- 较大稳态电流下能持续工作
- Reliable Configuration and convenient installment
- Have the strongest capability of surge current protection
- Maximum steady state operating current
- Persistnat operating when passing through larger steady state current

● 应用范围

- 转换电源，开关电源，UPS电源
- 各类大功率照明灯具
- 电加热器

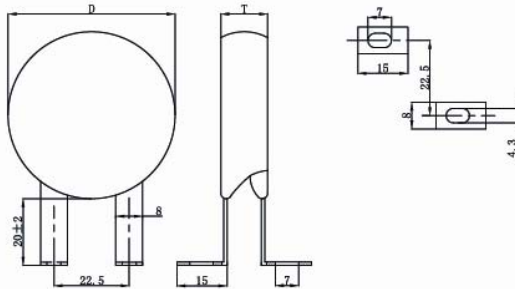
Applications

- Power conversion, switch power, UPS power
- All kinds of super-power lamps
- Electrical heater

MF74型NTC热敏电阻  
MF74 NTC Thermistor  
专利号: Z L03277490.7  
PATENT NO: 03277490.7

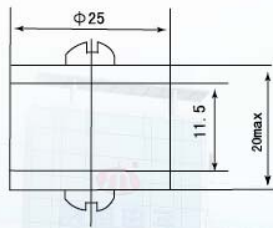
● 外形尺寸 Dimensions (mm)

MF73

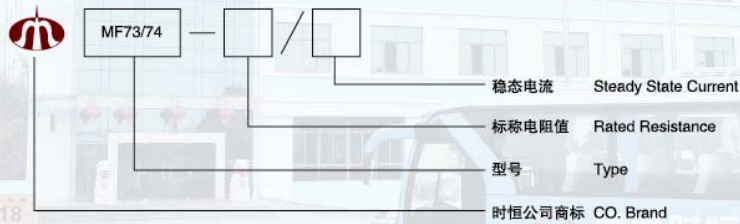


芯片直径 ±1 Chip Diameter ±1	30	35	40	45	50
外径(D) max Formal Diameter(D) max.	35	40	45	50	55
厚度(T) max Thickness(T) max.	15	18	18	18	18

MF74



● 产品标志说明 Specification



## MF73、MF74超大功率型NTC热敏电阻系列

### MF73、MF74 Super-power NTC Thermistor series

#### ● 主要技术参数 Main Techno-Parameter

MF73

型号 Part No.	R25 ± 20% (Ω)	最大稳态 电流 Max Steady State Current I <sub>max</sub> (A)	最大电流时 近似电阻值 Approx. R of Max. Current R <sub>max</sub> (Ω)	工作温度 范围(°C)	耗散 系数 Dissi. Coef. (mW/°C)	热时间 常数 Thermal time constant (s)			
本体直径: Φ30mm									
0.5/30	0.5	30	0.013	-40~+200	≥40	≤190			
1/30	1	30	0.014						
1.5/25	1.5	25	0.016						
2/23	2	23	0.019						
2.5/20	2.5	20	0.023						
3/19.5	3	19.5	0.026						
4/19	4	19	0.031						
4.7/18	4.7	18	0.035						
5/17	5	17	0.037						
6/17	6	17	0.042						
6.8/16	6.8	16	0.043						
7/15	7	15	0.044						
8/14	8	14	0.049						
10/13	10	13	0.056						
12/12	12	12	0.067						
15/11	15	11	0.078						
18/10	18	10	0.092						
20/9	20	9	0.113						
本体直径: Φ35mm									
0.5/32	0.5	32	0.01				-40~+200	≥45	≤280
1/32	1	32	0.011						
1.5/28	1.5	28	0.013						
2/25	2	25	0.017						
2.5/23	2.5	23	0.020						
3/22	3	22	0.023						
4/21	4	21	0.026						
4.7/20	4.7	20	0.029						
5/19	5	19	0.030						
6.8/18	6.8	18	0.035						
7/17	7	17	0.037						
8/16	8	16	0.041						
10/15	10	15	0.045						
12/14	12	14	0.051						
15/13	15	13	0.060						
18/11	18	11	0.072						
20/10	20	10	0.089						
本体直径: Φ40mm									
0.2/40	0.2	40	0.005	-40~+200	≥55	≤350			
0.5/40	0.5	40	0.008						
1/40	1	40	0.010						
1.5/36	1.5	36	0.012						
2/32	2	32	0.014						
2.5/30	2.5	30	0.018						
3/28	3	28	0.020						
4/27	4	27	0.022						
4.7/26	4.7	26	0.023						
5/25	5	25	0.028						
6.8/23	6.8	23	0.030						
8/20	8	20	0.034						
10/19	10	19	0.038						
12/18	12	18	0.040						
15/16	15	16	0.050						
18/14	18	14	0.062						
20/13	20	13	0.075						
本体直径: Φ45mm									
0.2/50	0.2	50	0.004				-40~+200	≥70	≤480
0.5/50	0.5	50	0.007						
1/48	1	48	0.009						
1.5/45	1.5	45	0.011						
2/40	2	40	0.012						

MF73

型号 Part No.	R25 ± 20% (Ω)	最大稳态 电流 Max Steady State Current I <sub>max</sub> (A)	最大电流时 近似电阻值 Approx. R of Max. Current R <sub>max</sub> (Ω)	工作温度 范围(°C)	耗散 系数 Dissi. Coef. (mW/°C)	热时间 常数 Thermal time constant (s)			
2.5/37	2.5	37	0.015	-40~+200	≥70	≤480			
3/35	3	35	0.018						
4/34	4	34	0.020						
4.7/32	4.7	32	0.022						
5/30	5	30	0.025						
6.8/28	6.8	28	0.028						
8/26	8	26	0.030						
10/24	10	24	0.032						
12/22	12	22	0.034						
15/20	15	20	0.042						
18/18	18	18	0.061						
20/16	20	16	0.070						
本体直径: Φ50mm									
0.2/60	0.2	60	0.003				-40~+200	≥90	≤650
0.5/60	0.5	60	0.006						
1/56	1	56	0.008						
1.5/50	1.5	50	0.010						
2/45	2	45	0.011						
2.5/42	2.5	42	0.012						
3/40	3	40	0.015						
4/38	4	38	0.018						
4.7/36	4.7	36	0.021						
5/35	5	35	0.022						
6.8/32	6.8	32	0.025						
8/29	8	29	0.028						
10/27	10	27	0.030						
12/25	12	25	0.033						
15/23	15	23	0.040						
18/20	18	20	0.055						
20/18	20	18	0.065						

MF74

型号 Part No.	R25 (Ω)	最大稳态 电流 Max Steady State Current I <sub>max</sub> (A)	最大电流时 近似电阻值 Approx. R of Max. Current R <sub>max</sub> (Ω)	耗散系数 (mW/°C) Dissi. Coef. (mW/°C)	热时间 常数 (s) Thermal time Constant (s)	工作温度 (°C) Operating Temp. (°C)
0.5/40	0.5	40	0.00875	118	340	-55~+200
0.7/36	0.7	36	0.0110	118	340	
1/32	1	32	0.0137	118	340	
1.3/27	1.3	27	0.0192	118	340	
1.5/27	1.5	27	0.0206	118	340	
2/25	2	25	0.0240	120	340	
2.5/25	2.5	25	0.0252	120	350	
3/23	3	23	0.0293	123	350	
4/21	4	21	0.0340	123	350	
5/21	5	21	0.0364	123	350	
6/18	6	18	0.0494	123	355	
8/18	8	18	0.0525	125	360	
10/18	10	18	0.0555	125	360	
12/15	12	15	0.0622	125	345	
16/15	16	15	0.0688	125	345	
20/15	20	15	0.0745	125	345	
25/15	25	15	0.0857	125	345	
30/12	30	12	0.1170	125	350	

注: 若非特别指出, R<sub>25</sub>的允许偏差为 ± 20%  
Remark: Unless the particular indication, the allowable tolerance of R<sub>25</sub> is ± 20%.